

FOR MESSRS :

SPECIFICATION FOR REFERENCE

(FOR LCD 20.1" APPLICATION PURPOSE)

TFT LCD BACKLIGHTING INVERTER

PART NO. : FIF2066-31A

BUYER'S PART NO: _____

CONTENTS

- 1. Electrical Characteristics**
- 2. Functional Pin Description**
- 3. Mechanical Drawings**

1. Electrical Characteristics

PANEL : LPL 20.1" LM201U##
Burst PWM Dimming

No.	Items (Unit)	Sign.	Condition		Min.	Typ.	Max.
1	Input Voltage (Vdc)	Vin			14 ~ 18 (Typ.:15V)		
2	Input Current (A)	Iin	Vin=15V	CTRL=0V	2.1	2.5	2.9
				CTRL=5V	1.1	1.5	1.9
3	Output Current Each Lmap1,2,3 (mA)	Iout 1,2,3	Vin=15V	CTRL=0V	6.0	7.0	8.0
				CTRL=5V	3.0	4.0	5.0
4	Output Current Each Lmap4,5,6 (mA)	Iout 4,5,6	Vin=15V	CTRL=0V	6.0	7.0	8.0
				CTRL=5V	3.0	4.0	5.0
5	Lamp Frequency (kHz)	f	Vin=15V	CTRL=0V	41	47	51
6	ON/OFF Control	ON	Vin=15V, ON/OFF=5V		Normal Operation		
		OFF	Vin=15V, ON/OFF=0V		Shunt-down (Lamp off)		
7	Dim Adjust (Lamp Current Control)	CTRL	CTRL=0V,Max Current		0 ~ 5 Volt.		
			CTRL=5V,Min Current				

2. Functional Pin Description

2.1. Input Connector CN1 : 12505WR-12A00(YEON-HO, JST, MOLEX)

Pin No.	Symbol	Description
11	CTRL	Dim Adjust, Apply 0V ~5Vdc to Control Lamp Current 0V : 7.0mA, 5V : 4.0mA (Each Lamp)
4,5,7 8,10,12	GND	GND
9	ON / OFF	Power System Return (5V:ON, 0V:OFF)
6	NC	No Connection
1,2,3	Vin	Input Voltage : 15V (14V ~ 18V)

2.2. Output Connector CN3,4 : SM04(9-E2)B-BHS-1-TB(JST) CN2,5 : SM02B-BHS-1-TB (JST, YEON-HO, MOLEX)

CN3,4

Pin No.	Symbol	Description
1	Lamp H1	High Voltage Connection to high side of Lamp.
2	Lamp H1	High Voltage Connection to high side of Lamp.
3	Lamp L1	Low Voltage Connection to low side of Lamp.
4	Lamp L2	Low Voltage Connection to low side of Lamp.

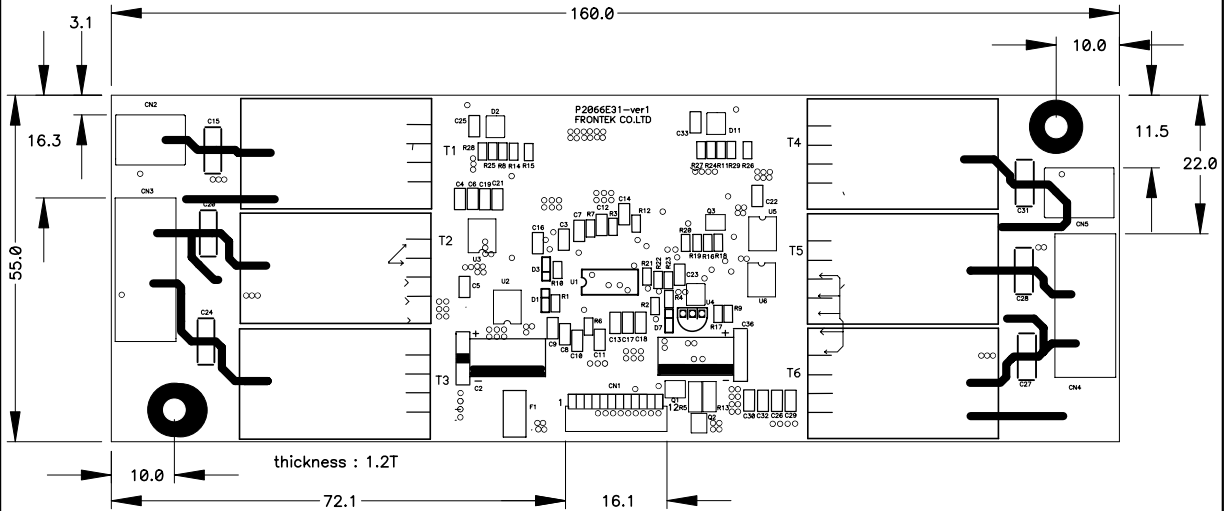
CN2,5

Pin No.	Symbol	Description
1	Lamp H1	High Voltage Connection to high side of Lamp.
2	Lamp L1	Low Voltage Connection to low side of Lamp.

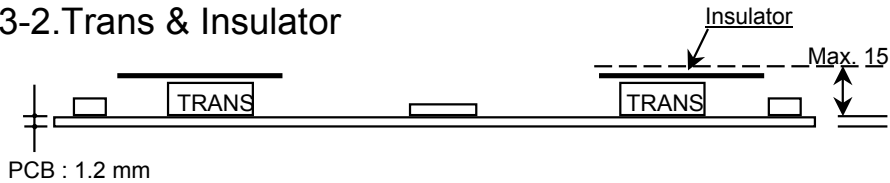
3.Mechanical Drawings

3-1.P.W.B

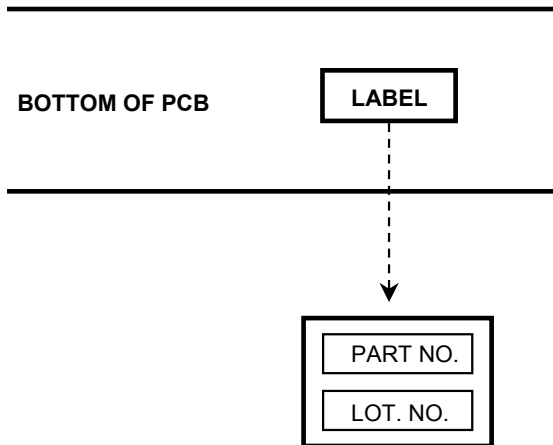
*. Unit : mm
 *.Tolerance : ± 0.2mm



3-2.Trans & Insulator



3-3.Marking



*. PART NO. : FIF2066-31A
 *. LOT NO. : F ○ ○ ○ ○ ○ ○ ○ ○
 LINE YEAR MONTH DAY