

FOR MESSRS :

SPECIFICATION FOR REFERENCE

(FOR LCD MNT 15" APPLICATION PURPOSE)

TFT LCD BACKLIGHTING INVERTER

PART NO. : FIF152-35A

BUYER'S PART NO.:

CONTENTS

- 1. Electrical Characteristics**
- 2. Functional Pin Description**
- 3. Mechanical Drawings**

1. Electrical Characteristics

► Input Voltage(Vdc) : 11.5 ~12.5

No.	Items (Unit)	Sign.	Condition		Min.	Typ.	Max.
1	Input Current (A)	lin	Vin=12V	CTRL=0V	0.8	0.95	1.05
				CTRL=5V	0.3	0.5	0.7
2	Output Current 1,2(mA)	Iout1,2	Vin=12V	CTRL=0V	7.2	8.2	9.0
				CTRL=5V	3.0	4.0	5.0
3							
4	Lamp Frequency (kHz)	f	Vin=12V	CTRL=5V	40	44	50
5	ON/OFF Control	ON	Vin=12V, ON/OFF=5V		Normal Operation		
		OFF	Vin=12V, ON/OFF=0V		Shunt-down (Lamp off)		
6	Dim Adjust (Lamp Current Control)	CTRL	CTRL=0V,Max Current		0.0 ~ 5.0 Volt.		
			CTRL=5V,Min Current				
7	Kick-Off Voltage(Vrms)	Vk-off	Kick-Off		MORE THAN 1100		

2. Functional Pin Description

2.1. Input Connector CN1 : 12505WR-12A00 (YEON-H0)

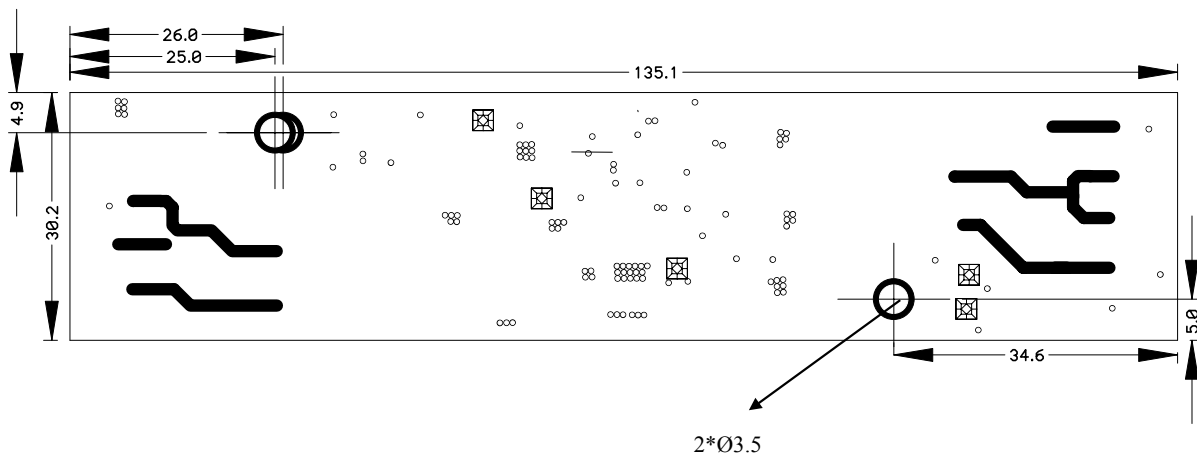
Pin No.	Symbol	Description
10,11,12	Vin	Input Voltage : 12V \pm 1V
1,3.5.6.8.9	GND	GND
2	CTRL	Dim Adjust, Apply 0V ~ 5Vdc to Control Lamp Current 0 V : 6.3mA, 5V : 3.0mA (Each Lamp)
4	ON / OFF	Power System Return (5V:ON, 0V:OFF)

2.2. Output Connector CN2,3:20015WR-05A00 (Yeon Ho,MOLEX,JOINT TECH)

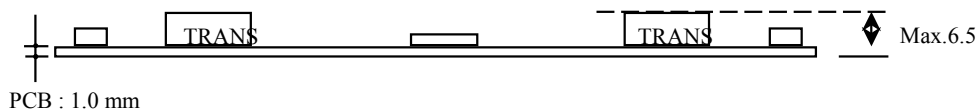
Pin No.	Symbol	Description
1	Lamp H1	High Voltage connection to high side of lamp.
2	Lamp L1	Low Voltage connection to low side of lamp.

3.Mechanical Drawings 3-1.P.W.B

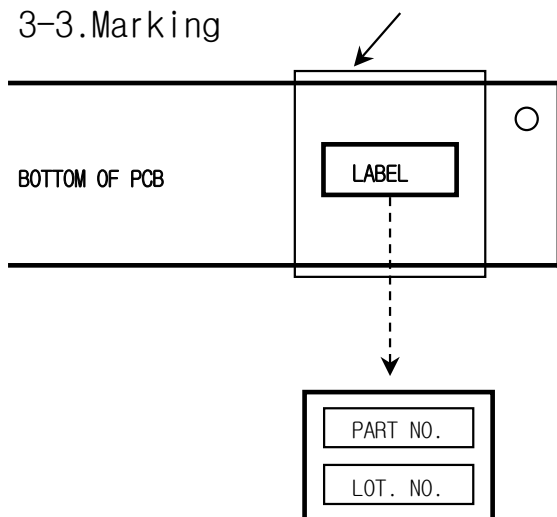
*. Unit : mm
*. Tolerance : ± 0.2mm



3-2.Trans & Insulator



3-3.Marking

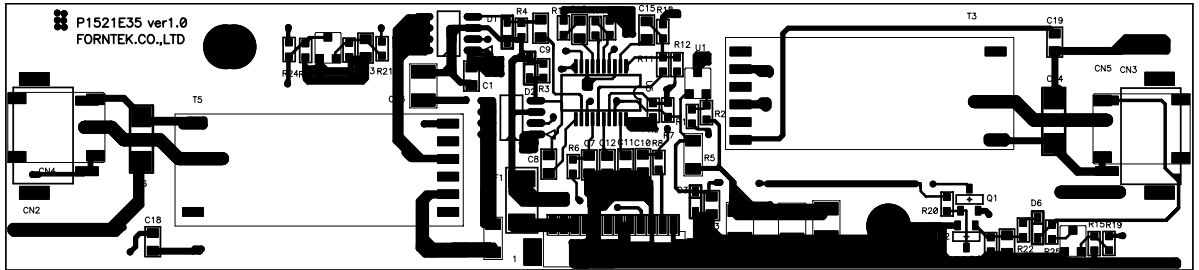


*. PART NO. : FIF152-35A
 *. LOT NO. : ○○○○○○
 YEAR MONTH DAY

4. 유첨파일

4-1 PCB

TOP



BOTTOM



4. 유첨파일

4-2 CIRCUIT

